

**SURVEY REPORT**  
**OKLAHOMA DEPARTMENT OF WILDLIFE CONSERVATION**



**FISH MANAGEMENT SURVEY AND RECOMMENDATIONS**  
**FOR**  
**SKIPOUT LAKE**  
**2024**

## **SURVEY REPORT**

**State:** Oklahoma

**Project Title:** Skipout Lake Fish Management Survey Report

**Period Covered:** 2013-2024

**Prepared by:** Dalton Norris

**Date Prepared:** January 2025

### **SKIPOUT LAKE**

#### **ABSTRACT**

Skipout Lake was only sampled three times in the last ten years. These sample methods included two boat electrofishing surveys for largemouth bass in 2018 and 2024, and a tandem hoop net survey for channel catfish in 2022. Results from these surveys showed that there is a large population of largemouth bass due to high catch per unit effort (CPUE) values. Results also show that there is a smaller population of channel catfish due to a lower CPUE value.

## **INTRO**

Skipout Lake is located in Roger Mills County approximately 3 km south and 5 km east of Reydon, Oklahoma. Skipout is located in Black Kettle National Grassland and has a surface area of 60 surface acres.

Skipout Lake is open to fishing year-round and is known for being a good largemouth bass fishery. This may be due to Florida largemouth bass stocking efforts in 2016 and 2019 (Appendix 2).

Habitat was deployed at Skipout Lake in the form of artificial structure called spider blocks as well as a combination of artificial and natural fish attractors (Appendix 1).

Skipout Lake was sampled in 2018 and 2024 by means of boat electrofishing surveys for largemouth bass. A tandem hoop net survey for channel catfish was also conducted in 2022.

## **RESULTS**

### **CHANNEL CATFISH**

Channel catfish were surveyed in the summer of 2022 at Skipout Lake. The surveys were conducted following Standard Sampling Procedures for Fisheries Management. Tandem hoop net surveys were conducted by setting six stations of three net nights each totaling 18 net nights. Each station was three hoop nets set in tandem with the bridle end tied to the cod end. Each of these three nets was baited with a whole bar of Zoat soap (400g). This bait was first placed in a 0.9 kg plastic sample jar with 25-30 6 mm holes in it. The largest hoop on these nets was 0.8 meters and the net itself was approximately 3.4 meters long.

In 2022, the catch per unit effort (CPUE) value for channel catfish was 2.28. This low CPUE value demonstrates that the channel catfish population in Skipout Lake. The statewide average CPUE value for channel catfish hoop net surveys in Oklahoma is CPUE=4.27. The CPUE value from the 2022 survey was lower than the statewide average CPUE value (Table 1).

Relative weight (Wr) values for the 2022 survey were around the Wr=80 mark indicating good body condition. The substock and stock size class were both over the Wr=80 mark, whereas the quality size class fell below. The statewide average CPUE value for channel catfish hoop net surveys is Wr=88. Only the substock size class met this Wr=88 average value (Table 1).

The proportional size distribution (PSD) value was very low at Skipout. With a value of PSD=8, there is only a small proportion of individuals collected from the survey that were of favorable size for anglers to interact with. The statewide average PSD value for channel catfish collected in hoop nets surveys is PSD=24. This value of PSD=24 is much higher than the recorded value of PSD=8 in 2022 (Table 2).

Length frequency figures show that there is a higher frequency of smaller individuals collected (Figure 1). The sample size for the survey was small and there is only one year of data limiting the analysis that can be accurately conducted.

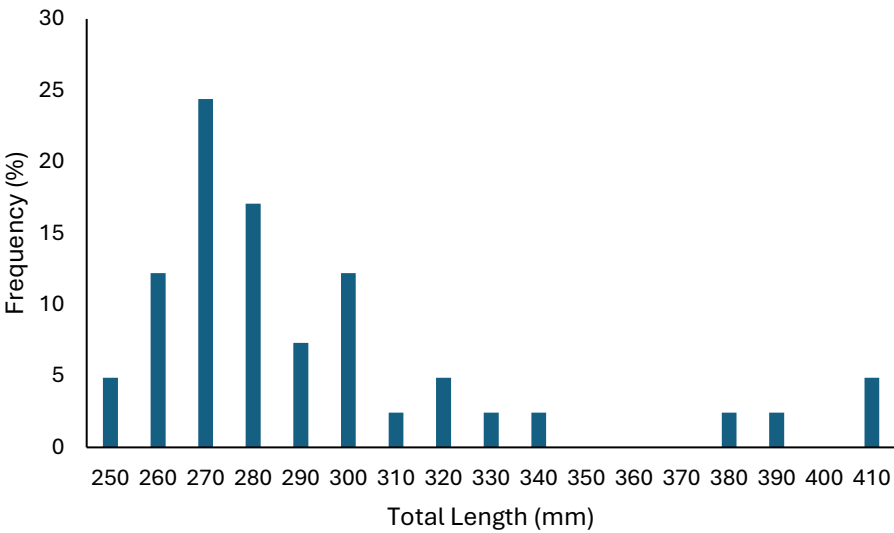
It is recommended that additional surveys on Skipout Lake be conducted, and channel catfish stocking should be continued to supplement the population.

**Table 1:** Total number (No), catch per unit effort (CPUE), and relative weights (Wr) by size group of Channel Catfish collected in hoop net surveys from Skipout Lake.

		Total	Substock		Stock 280mm		Quality 410mm	
		CPUE	<280mm					
Year	No	CPUE	CPUE	Wr	CPUE	Wr	CPUE	Wr
2022	41	2.28	0.83	87.54	1.33	83.05	0.11	72.66

**Table 2:** Proportional Size Distribution (PSD) for channel catfish collected from Skipout Lake hoop net surveys.

Year	PSD
2022	8



**Figure 1:** Channel Catfish Length Frequencies for Skipout Lake in 2022.

**LARGEMOUTH BASS**

Largemouth bass surveys were conducted in 2018 and 2024 by means of shoreline, boat electrofishing surveys. The electrofishing surveys consisted of 10-minute stations randomly around the shoreline of Skipout Lake. Standard Sampling Procedures for Fisheries Management were followed while conducting these largemouth bass electrofishing surveys.

In 2018, the catch per unit effort (CPUE) value was 82.67. This high CPUE demonstrates that the largemouth bass population is very large. The statewide average CPUE value for largemouth bass electrofishing fishing surveys is CPUE=62.5. The 2018 electrofishing survey had a much higher CPUE value than the statewide average (Table 3).

In 2024, The catch per unit effort (CPUE) value was 53.00. This is lower than the previous electrofishing survey conducted in 2018, which would indicate that the bass population has decreased since 2018. This years CPUE is also lower than the statewide average CPUE of 62.5 (Table 3).

Relative weight (Wr) values were high for individuals collected in the 2018 survey. These Wr values were all over the favorable value of Wr=80 that demonstrates good body condition of individuals. The statewide average Wr value for largemouth bass electrofishing surveys is Wr=92. The substock and preferred size classes were the only two size classes that were above the statewide average Wr value (Table 3).

Relative weight (Wr) values were high for individuals collected in the 2024 survey. All Wr values in 2024 exceeded the favorable value of Wr=80 demonstrating good body composition in the individuals. The statewide average for largemouth bass electrofishing surveys is Wr=92. All size classes of fish in the 2024 exceeded this Wr showing an above average body composition for Oklahoma largemouth bass (Table 3).

Proportional size distribution (PSD) values for largemouth bass collected in electrofishing surveys at Skipout Lake were below the statewide average. The statewide average PSD value for largemouth bass electrofishing surveys is PSD=72. The PSD value observed from the 2018 survey was PSD=47 (Table 4).

Proportional size distribution (PSD) values for largemouth bass collected in electrofishing surveys at Skipout Lake were again below the statewide average. The statewide average PSD value for largemouth bass electrofishing surveys is PSD=72. The PSD value observed in the 2024 survey was PSD=67 (Table 4).

Figure 2 shows similar size distribution among largemouth bass in both years sampling. This size distribution is well spread out demonstrating a healthy bass fishery.

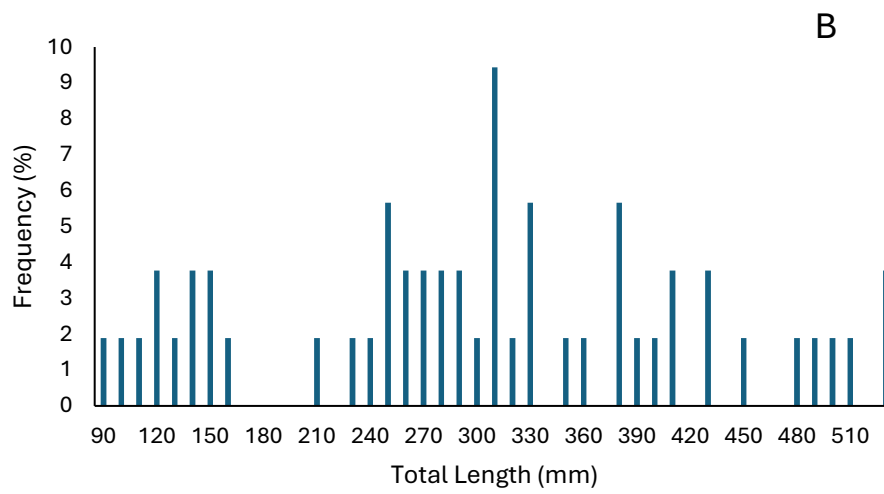
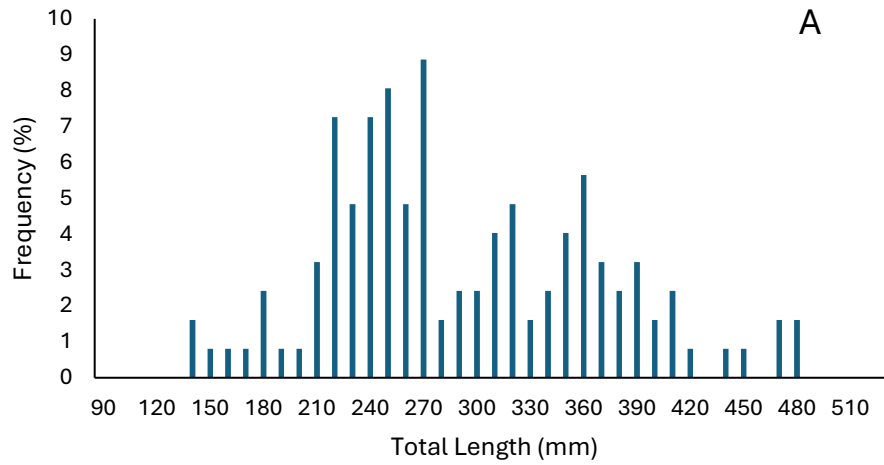
Overall, Skipout has a good population of largemouth bass with a balanced size structure. It is recommended that largemouth bass electrofishing surveys should be conducted more at Skipout Lake to evaluate the fishery more thoroughly.

**Table 3:** Total number (No), catch per unit effort (CPUE), and relative weights (Wr) by size group of Largemouth Bass collected in electrofishing surveys from Skipout Lake.

Year	No	Total	Substock		Stock		Quality		Preferred		Memorable	
		CPUE	CPUE	Wr	CPUE	Wr	CPUE	Wr	CPUE	Wr	CPUE	Wr
2024	53	53.00	11.0	104.3	14.00	95.76	12.00	94.92	13.00	96.82	3.00	108.69
2018	124	82.67	5.33	95.6	41.33	88.46	22.67	82	13.33	93.13	-	-

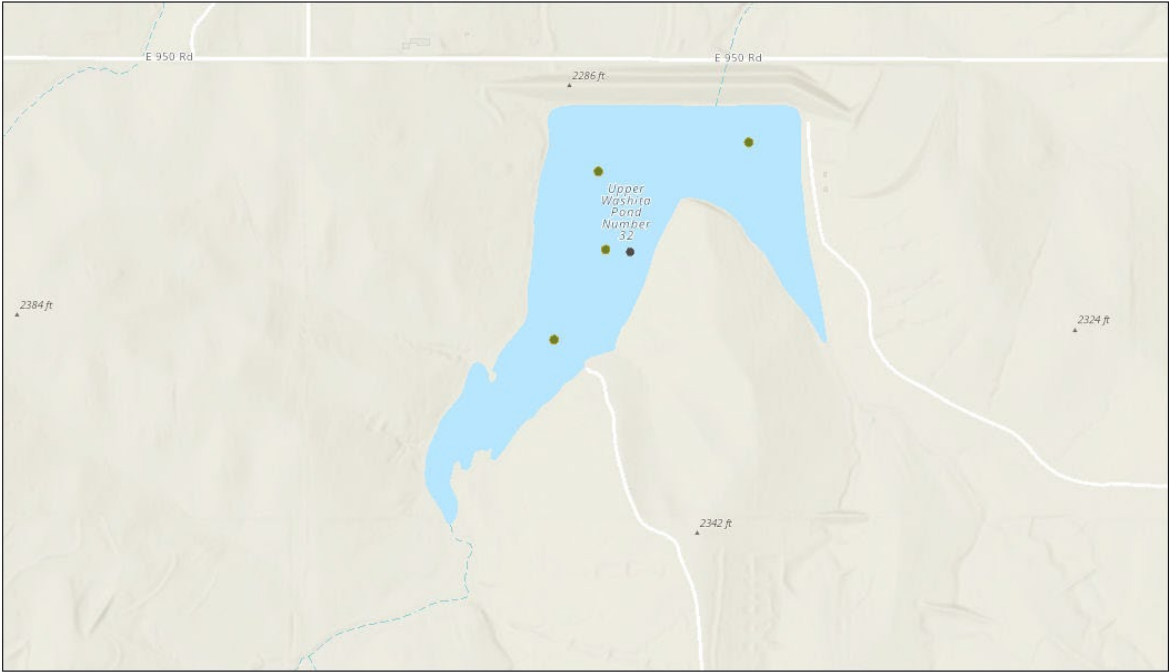
**Table 4:** Proportional Size Distribution (PSD) and Proportional Size Distribution of Preferred (PSD-P) for largemouth bass collected from Skipout Lake electrofishing surveys.

Year	PSD	PSD-P	PSD-M
2024	67	38	7
2018	47	17	-



**Figure 2:** Largemouth Bass Length Frequencies for Skipout Lake in 2018(A) and 2024(B).

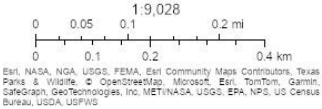
Skipout Lake Fish Attractors



1/10/2024, 3:12:23 PM

FishAttractors

- |               |                 |               |           |
|---------------|-----------------|---------------|-----------|
| ■ Pallet      | ◆ Sunken Boat   | ■ Other       |           |
| ■ Brush Pile  | ■ PVC Structure | ■ Tire Reefs  | ■ Unknown |
| ▲ Gravel Pile | ■ Spider Blocks | ■ Combination |           |



Web AppBuilder for ArcGIS

Esri, NASA, NGA, USGS, FEMA | Esri Community Maps Contributors, Texas Parks & Wildlife, © OpenStreetMap, Microsoft, Esri, TomTom, Garmin, SafeGraph, GeoTechnologies, Inc, METI/NASA, USGS, EPA, NPS, US Census Bureau, USDA, USFWS |

APPENDIX 1



<b>Year</b>	<b>Species</b>	<b>Number</b>	<b>Size (mm)</b>
<b>2024</b>	Channel Catfish	2,120	230
<b>2020</b>	Channel Catfish	42,330	50.8
<b>2019</b>	Florida Largemouth Bass	75	152.4- 203.2
<b>2016</b>	Channel Catfish	6,000	101.6
	Florida Largemouth Bass	125	254
<b>2014</b>	Florida Largemouth Bass	630	152.4
<b>2013</b>	Channel Catfish	1,881	254

## APPENDIX 2